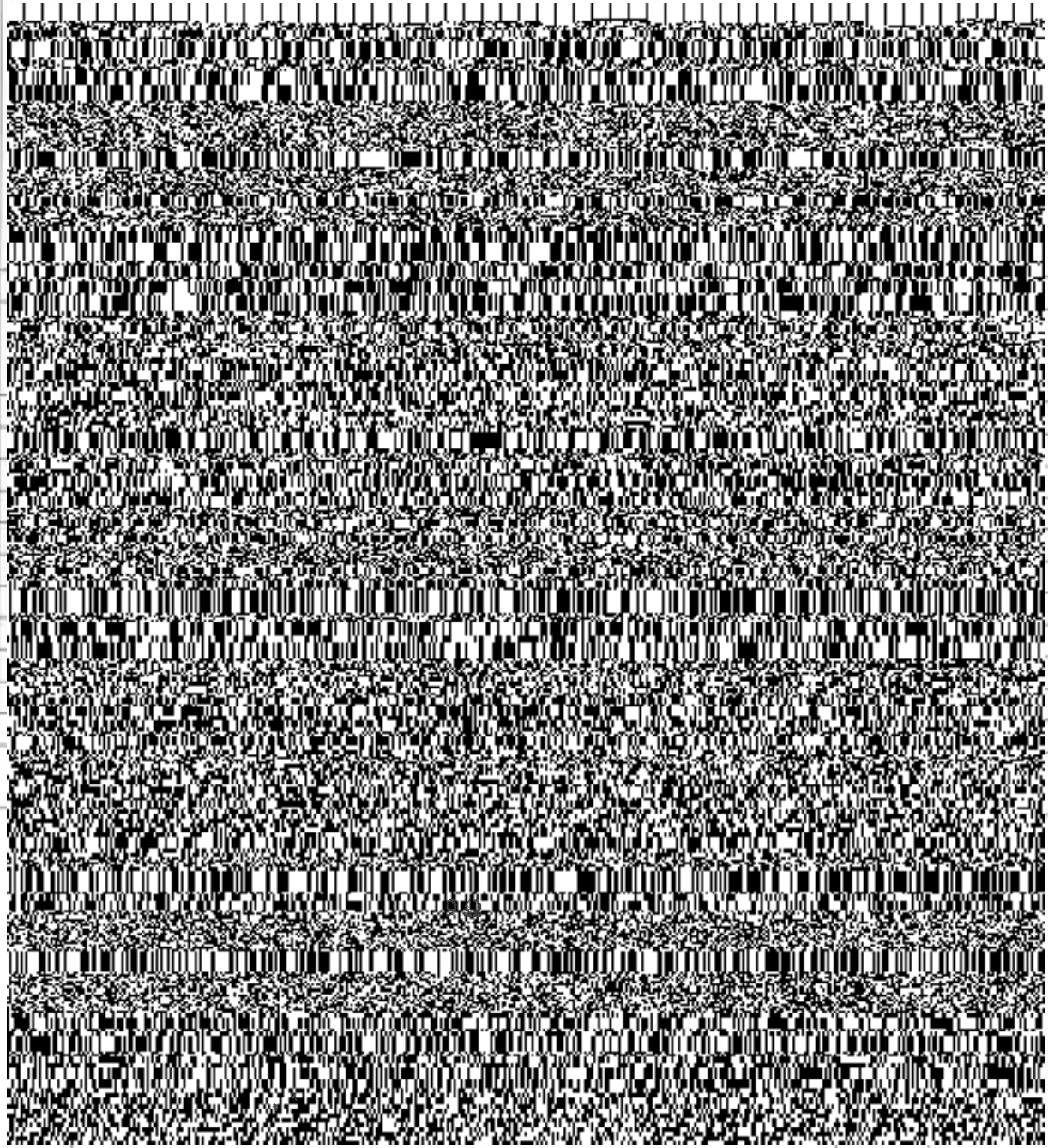




R22 Regulation *Subject code: 4E1AI*
TKR COLLEGE OF ENGINEERING AND TECHNOLOGY
(Autonomous, Accredited by NAAC with 'A+' Grade)

Reliant In Character © International In Excellence



	OR		
3	a) Discuss the voltage, current relations in R, L and C parameters. [5M]	1	3

	b) State and explain Thevenin's theorem with an example. [5M]		
4	Explain about series RL circuit across an AC source with neat phasor diagram. [10M]	2	4
	OR		
5	Define i) Timeperiod ii) instantaneous value iii) RMS Value iv) Average value V)Form factor [10M]	2	2
6	Derive the EMF equation of DC generator. [10M]	4	2
	OR		
7	Discuss Construction Details of Transformer with neat Sketch. [10M]	3	3
8	a) Derive the torque equation of DC motor? [5M] b) Discuss how the rotating magnetic field is produced in 3-phase induction motor? [5M]	4	2
	OR		
9	a) Explain various types of DC generators. [5M] b) Explain the principle of operation of single-phase induction motor with neat diagram. [5M]	4	1
10	a) Discuss the characteristics of Batteries? [5M] b) Explain the principle of operation of ELCB? [5M]	5	2
	OR		
11	Discuss various methods of earthing. [10M]	5	1