



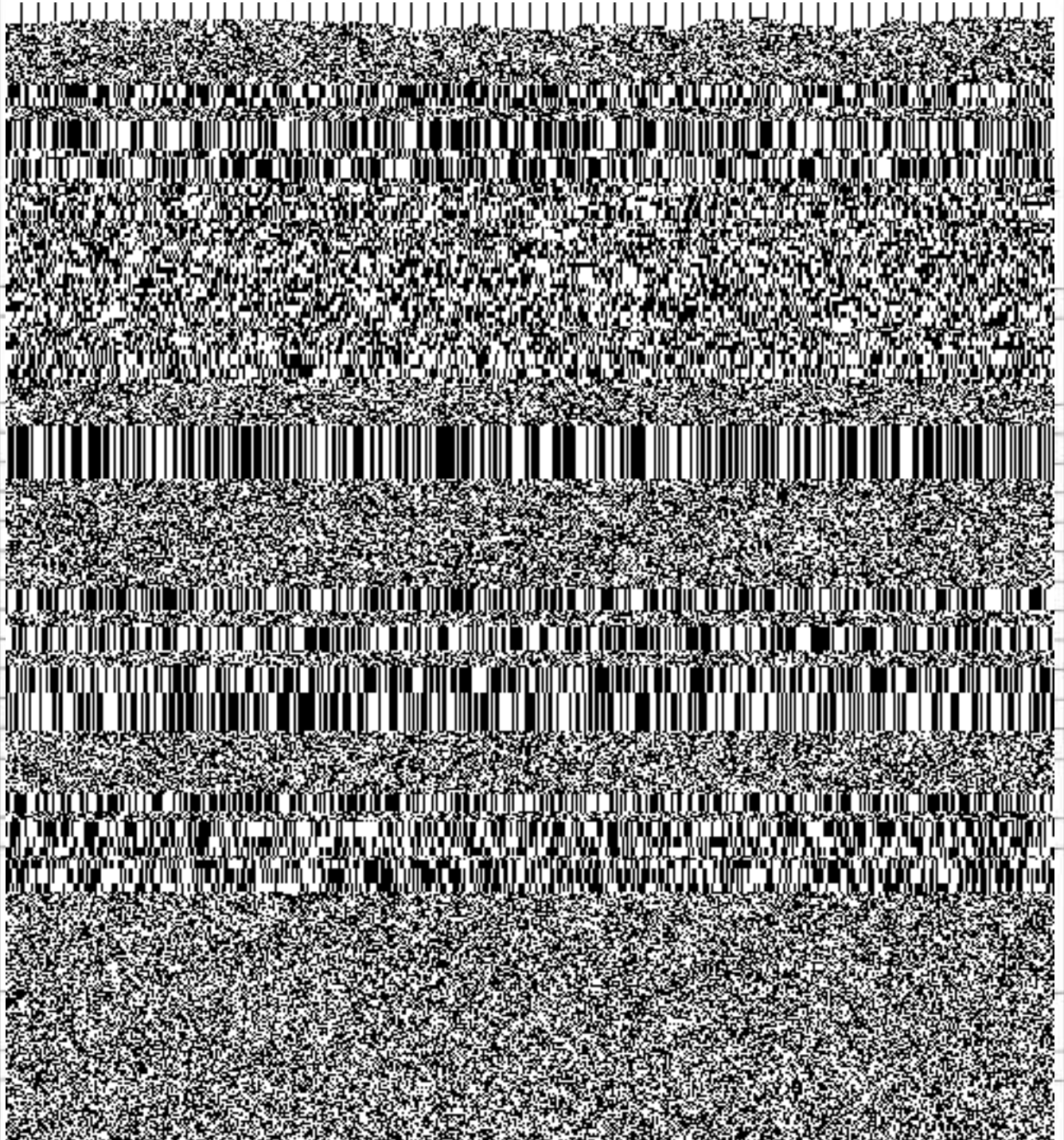
*R22 Regulation*

*Subject code: 4E1AC*

# **TKR COLLEGE OF ENGINEERING AND TECHNOLOGY**

(Autonomous, Accredited by NAAC with 'A+' Grade)

Indian In Character | International in Excellence



6	Explain the working principle of single-phase Transformer.	[10M]	3	L2
OR				
7	a) Explain working principle of three phase induction motor	[7M]	3	L2
	b) Explain various losses in single phase transformer.	[3M]	3	L2
8	a) Draw and explain V-I Characteristics of PN Junction diode.	[7M]	4	L2
	b) List the applications of Zener diode?	[3M]	4	L2
OR				
9	a) Explain static and dynamic resistance of a diode.	[5M]	4	L2
	b) Explain capacitive filters.	[5M]	4	L2
10	a) Explain principle of operation of a Bipolar Junction Transistor.	[5M]	5	L2
	b) Draw the input and output characteristics of a transistor in common emitter configurations.	[5M]	5	L3
OR				
11	a) Explain constructional details of FET.	[5M]	5	L3
	b) Explain why BJTs are called bipolar devices while FETs are called unipolar devices	[5M]	5	L2