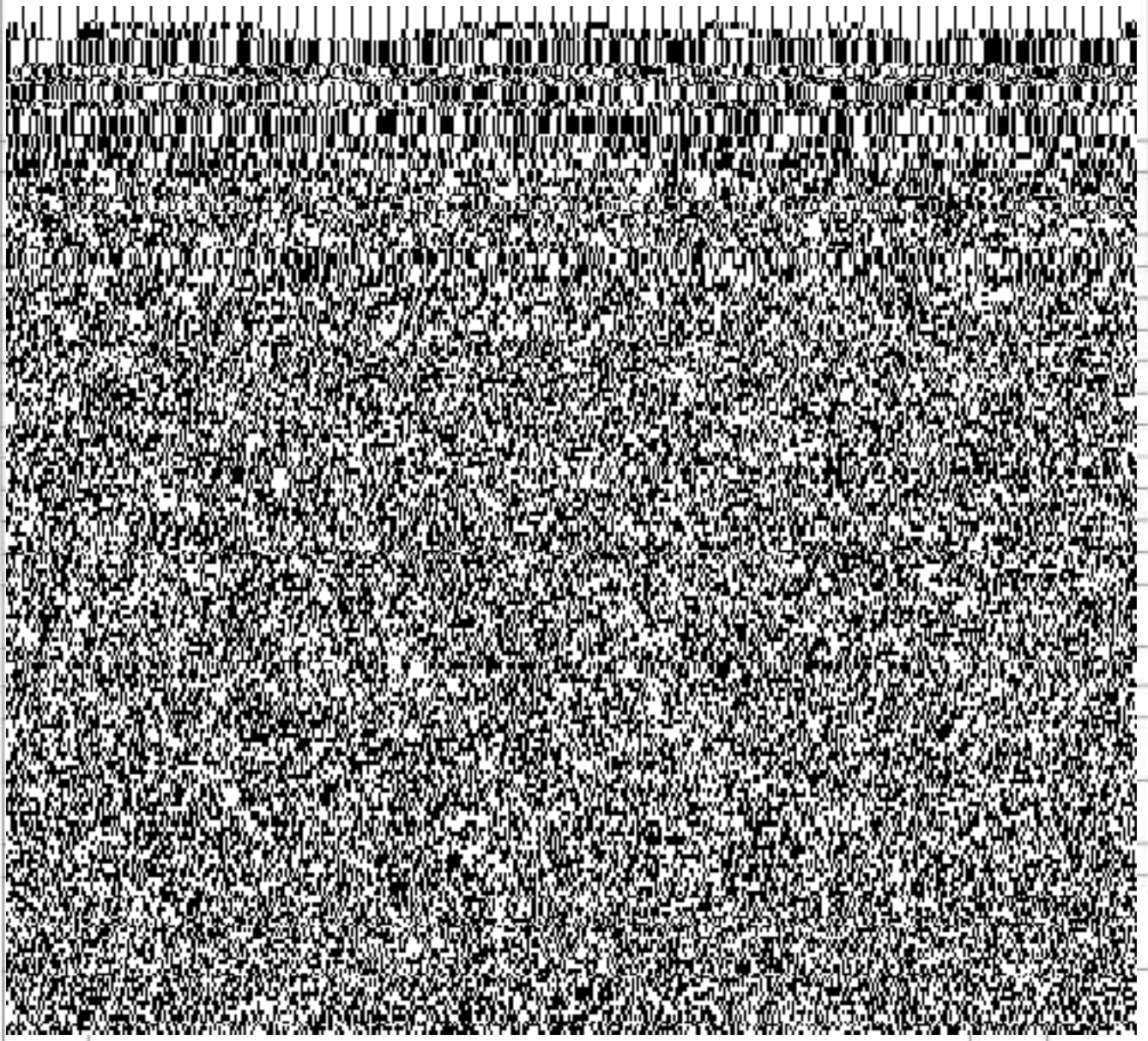




R22 Regulation *Subject code: 4B1AB*
TKR COLLEGE OF ENGINEERING AND TECHNOLOGY
(Autonomous, Accredited by NAAC with 'A+' Grade)

B.Tech I Semester Regular/Supplementary Examinations, January 2025

ENGINEERING PHYSICS
(Common to CE, EEE & ECE)



| | | | | |
|----|---|---|---|--|
| | OR | | | |
| 7 | Explain construction and working of solid oxide fuel cell. [10M] | 3 | 2 | |
| 8 | A. Write a note on Origin of magnetic moment in solids? [5M] B. Compare between soft and hard magnetic materials. [5M] | 4 | 3 | |
| | OR | | | |
| 9 | A. Explain the types of Superconductors. [7M] B. List the applications of Superconductors. [3M] | 4 | 2 | |
| 10 | Explain construction and working of He-Ne LASER with neat diagram. [10M] | 5 | 3 | |
| | OR | | | |
| 11 | Obtain equations for acceptance angle and numerical aperture. [10M] | 5 | 4 | |