



R20 Regulation

Subject code:3P4CE

TKR COLLEGE OF ENGINEERING AND TECHNOLOGY

(Autonomous, Accredited by NAAC with 'A+' Grade)

B.Tech IV Semester Supplementary Examinations, December 2024

MACHINE DRAWING (Mechanical Engineering)

Maximum Marks: 70

Date:17.12.2024

Duration: 3 hours

Part-A

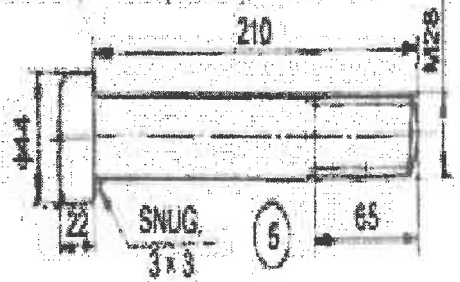
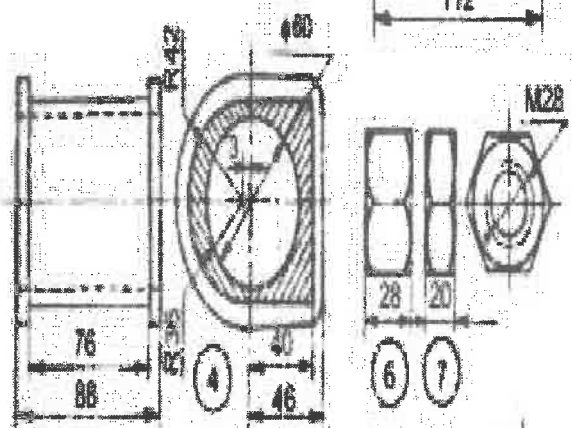
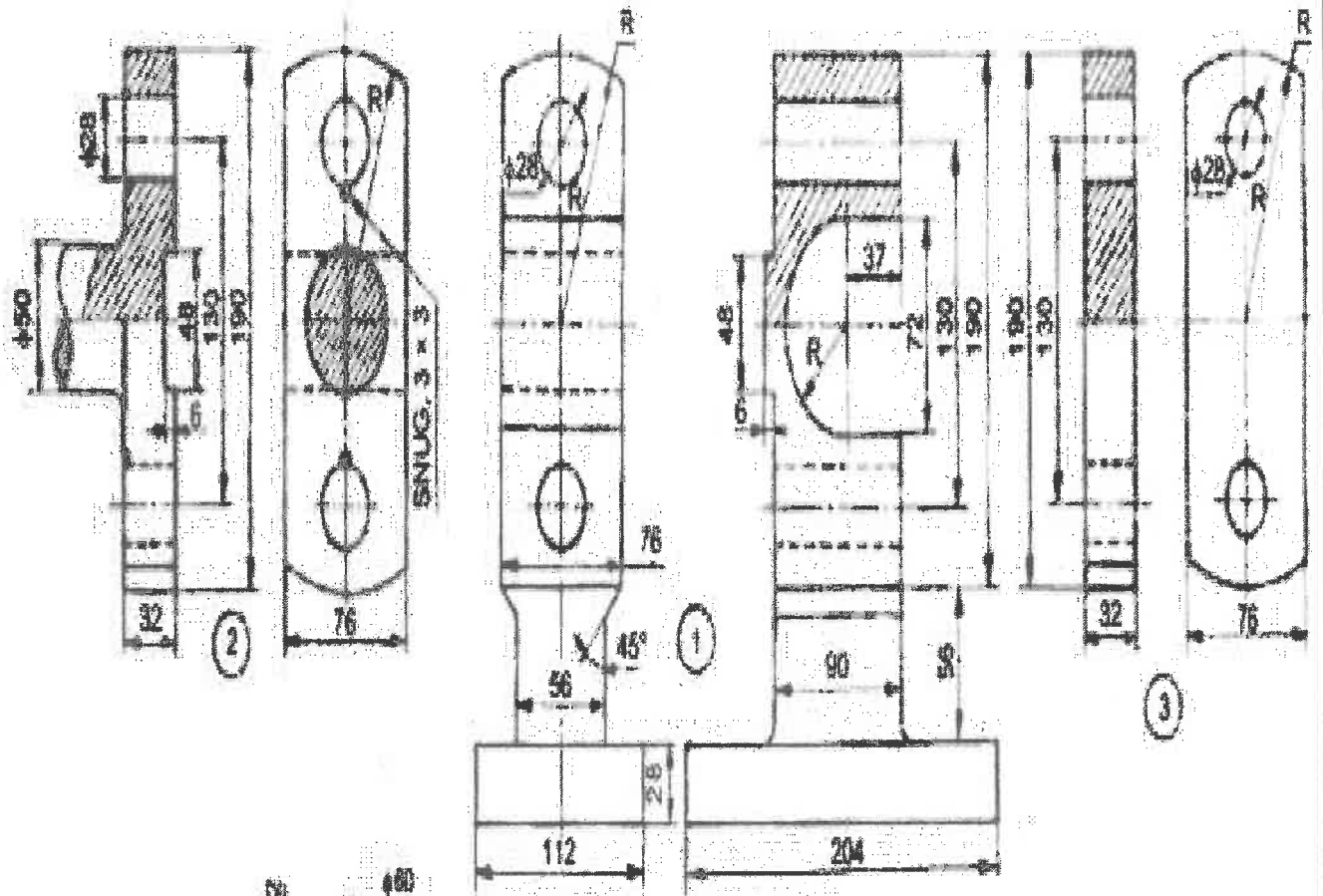
Answer any three questions. (3X10M=30) CO Bloom Tx
Marks)

1	Draw the three views of a hexagonal headed bolt of nominal diameter 25mm and length 100 mm with a hexagonal nut and washer.	1	L1
2	Draw sectional view of single riveted single plate lap joint with thickness 5mm.	1	L1
3	Give the proportions of a hexagonal nut, in terms of the nominal diameter of the bolt of 20 mm.	2	L1
4	Draw the sectional view from the front, and view from the side of a cotter joint with sleeve used to connect two rods of 30 mm diameter each.	2	L1

Part-B

Answer All the following questions. (1X40M=40Marks) CO Bloom Tx

5	Prepare the Assembly drawing of the following [40M]	1	L2
---	---	---	----



Parts list

Sl. No.	Name	Matr	Qty
1	Body	CI	1
2	Rod end	MS	1
3	Cover plate	MS	1
4	Brasses	Brass	1
5	Bolt	—	2
6	Nut	—	2
7	Lock nut	—	2