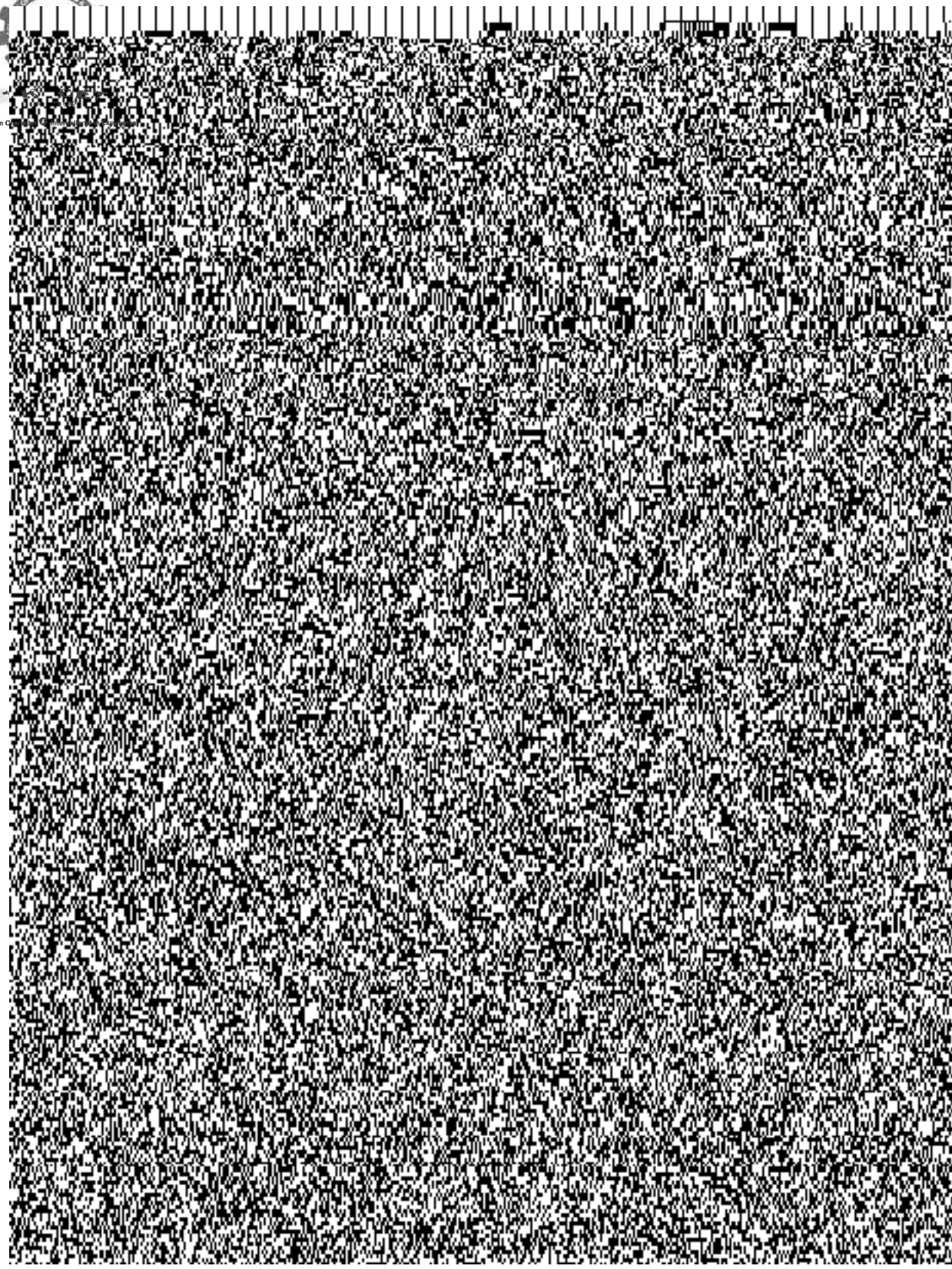




Indian Institute of Technology



13. Find the current flowing through 4 ohm resistor for the circuit given below Figure: 1, using Thevenin's Theorem. [10]

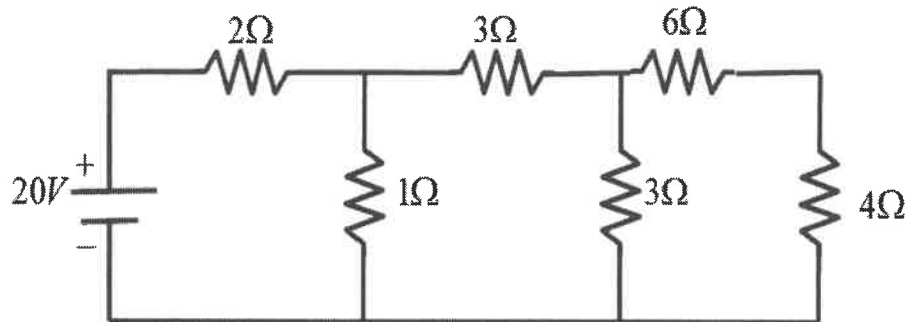


Figure: 1

(OR)

14. What is the Importance of Millman's theorem gives one Example. [10]
15. With help of energy band diagram, Explain Principle of operation and characteristics of Tunnel diode. [10]
16. Draw the VI characteristic of SCR and explain its operation, and Indicate Holding & latching Current in VI Characteristic. [10]
17. Draw the full-Wave Rectifier with help of L Section Filter and compare input/output waveforms. [10]
18. Draw the Bridge Rectifier with help of π - Section filter Compare input and output waveforms. [10]
19. Explain the operation of an N-Channel Enhancement type MOSFET with the help of its Drain and Transfer Characteristics. [10]

(OR)

20. Sketch and explain the characteristics of N-Channel JFET. [10]